

# Масс-спектрометр

## MGA-1200EC

### Технические характеристики

Архангельск (8182)63-90-72  
Астана +7(7172)727-132  
Белгород (4722)40-23-64  
Брянск (4832)59-03-52  
Владивосток (423)249-28-31  
Волгоград (844)278-03-48  
Вологда (8172)26-41-59  
Воронеж (473)204-51-73  
Екатеринбург (343)384-55-89  
Иваново (4932)77-34-06  
Ижевск (3412)26-03-58  
Казань (843)206-01-48  
Калининград (4012)72-03-81  
Калуга (4842)92-23-67  
Кемерово (3842)65-04-62  
Киров (8332)68-02-04

Краснодар (861)203-40-90  
Красноярск (391)204-63-61  
Курск (4712)77-13-04  
Липецк (4742)52-20-81  
Магнитогорск (3519)55-03-13  
Москва (495)268-04-70  
Мурманск (8152)59-64-93  
Набережные Челны (8552)20-53-41  
Нижний Новгород (831)429-08-12  
Новокузнецк (3843)20-46-81  
Новосибирск (383)227-86-73  
Орел (4862)44-53-42  
Оренбург (3532)37-68-04  
Пенза (8412)22-31-16  
Пермь (342)205-81-47  
Ростов-на-Дону (863)308-18-15

Рязань (4912)46-61-64  
Самара (846)206-03-16  
Санкт-Петербург (812)309-46-40  
Саратов (845)249-38-78  
Смоленск (4812)29-41-54  
Сочи (862)225-72-31  
Ставрополь (8652)20-65-13  
Тверь (4822)63-31-35  
Томск (3822)98-41-53  
Тула (4872)74-02-29  
Тюмень (3452)66-21-18  
Ульяновск (8422)24-23-59  
Уфа (347)229-48-12  
Челябинск (351)202-03-61  
Череповец (8202)49-02-64  
Ярославль (4852)69-52-93



## Process Mass Spectrometer

The **MGA™1200EC™** process mass spectrometer is a fixed magnetic sector analyzer that provides rapid, accurate and stable real-time analysis of up to 16 gas components in multiple gas streams. It's the fastest Process mass spec on the market

- It is hardware configurable to provide both continuous and instantaneous readings of gas concentrations; less than 1 second response time for all components.
- Windows® based Prime™ software allows operator access and control of a variety of operating parameters.



- Provides mid-ppm to 100% level analysis of components.
- Long-life turbomolecular pumping system allows rapid vacuum pump-down in less than 2 minutes.
- Unmatched stability provides best-in-industry drift specification and longest intervals for calibration.
- Ability to interface to process streams with capability of driving both rotary and solenoid manifolds.
- Optional validation assistance program for 21 CFR Part 11 compliance.
- Available for general purpose and hazardous area operation.



### M G A A P P L I C A T I O N S

#### Ammonia/Urea

H<sub>2</sub>/N<sub>2</sub> Converter Efficiency  
Reactor Efficiency  
Separation

#### Biotech/Pharmaceuticals

Microbial Fermentation  
Mammalian Cell Culture  
Reactor Feed Gas

#### Ethylene Oxide

Reactor Inlet  
Reactor Outlet  
Pilot Plant

#### Fuel Cell Analysis

#### Leak Detection

Hydrogen Leaks  
Hazardous Gases

#### Petroleum Refining

Hydrogen Plants  
Hydrogen Reforming  
Coal Gasification  
Ethanol Plants  
Flame Stack Monitoring

#### Steel Processing

Blast Furnace Top Gas  
BOF Top Gas  
Coke Oven Gas

#### Turbine Feed Gas Analysis

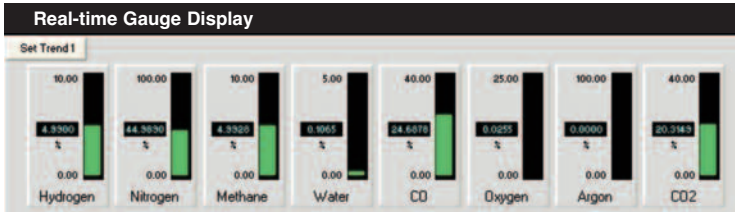
### MGA Advantage

- Continuous and instantaneous analysis
- Analyze up to 128 streams, including both process and calibration gases, in user-defined order
- Standard communications
  - RS-232 Serial
  - Modbus® RTU & TCP/IP
- Optional communications
  - Analog (0-10 Vdc, 4-20 mA)
  - OPC®
  - Profibus
- Scalable sampling systems and calibration manifolds available

# Prime™ Software Power Drives the Process



Prime software is used by the MGA™ 1200EC analyzer for process monitoring of multi-component gas streams. A Windows® based graphical interface provides the user with capabilities such as real-time analysis, automatic calibration, trending, sample system control and DCS communications. The Prime software is delivered with a data station.



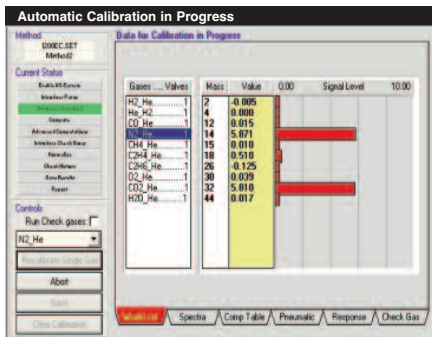
### Real-time displays

Formats include gauge, tabular or multi-stream trending. Up to 96 user-defined elements can be displayed in real-time on six pages.

- MGA electrometer outputs
- MGA compositional analysis
- User-defined calculations and alarms
- User-supplied analog and digital inputs



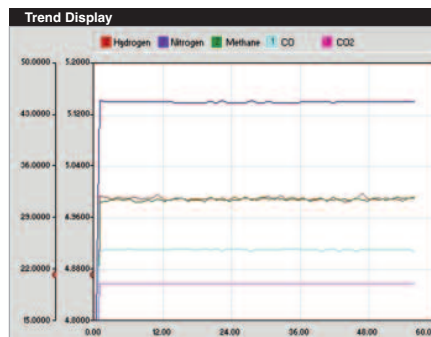
Custom Sample Conditioning System



### Calibration

Calibration is fully automatic with a Prime-controlled sampling system for calibration standards. Calibration can be initiated manually or initiated automatically based on:

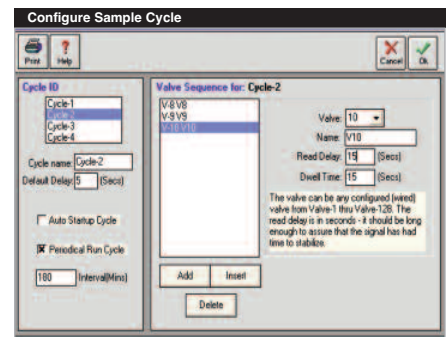
- Elapsed time
- Run time
- Ethernet/Modbus RTU Signal



### Trending

Up to 36 user-defined elements can be trended in real-time. Features include:

- Adjustable time X-axis
- User specified colors
- Two adjustable Y-axes



### Sample System Control

Prime software can control rotary valve or solenoid valve based systems with user-definable sequences:

- Auto-starting sequence
- Auto-starting periodic cycle
- Up to 128 valves

AIT can design and build a variety of turnkey accessories to optimize your system.

**По вопросам продаж и поддержки обращайтесь:**

Архангельск (8182)63-90-72  
Астана +7(7172)727-132  
Белгород (4722)40-23-64  
Брянск (4832)59-03-52  
Владивосток (423)249-28-31  
Волгоград (844)278-03-48  
Вологда (8172)26-41-59  
Воронеж (473)204-51-73  
Екатеринбург (343)384-55-89  
Иваново (4932)77-34-06  
Ижевск (3412)26-03-58  
Казань (843)206-01-48  
Калининград (4012)72-03-81  
Калуга (4842)92-23-67  
Кемерово (3842)65-04-62  
Киров (8332)68-02-04

Краснодар (861)203-40-90  
Красноярск (391)204-63-61  
Курск (4712)77-13-04  
Липецк (4742)52-20-81  
Магнитогорск (3519)55-03-13  
Москва (495)268-04-70  
Мурманск (8152)59-64-93  
Набережные Челны (8552)20-53-41  
Нижний Новгород (831)429-08-12  
Новокузнецк (3843)20-46-81  
Новосибирск (383)227-86-73  
Орел (4862)44-53-42  
Оренбург (3532)37-68-04  
Пенза (8412)22-31-16  
Пермь (342)205-81-47  
Ростов-на-Дону (863)308-18-15

Рязань (4912)46-61-64  
Самара (846)206-03-16  
Санкт-Петербург (812)309-46-40  
Саратов (845)249-38-78  
Смоленск (4812)29-41-54  
Сочи (862)225-72-31  
Ставрополь (8652)20-65-13  
Тверь (4822)63-31-35  
Томск (3822)98-41-53  
Тула (4872)74-02-29  
Тюмень (3452)66-21-18  
Ульяновск (8422)24-23-59  
Уфа (347)229-48-12  
Челябинск (351)202-03-61  
Череповец (8202)49-02-64  
Ярославль (4852)69-52-93

Единый адрес для всех регионов: [ati@nt-rt.ru](mailto:ati@nt-rt.ru) || [www.ait.nt-rt.ru](http://www.ait.nt-rt.ru)